

## SPECIFICATIONS

<b>Model</b>	HT3200UV
<b>Printhead</b>	Kyocera KJ4A
<b>Quantity of printheads</b>	4-10 pcs(Double rows)
<b>Resolution</b>	360*3600dpi
<b>Draft</b>	142m <sup>2</sup> /h
<b>Print speed</b>	<b>Production</b> 105m <sup>2</sup> /h
	<b>Quality</b> 80m <sup>2</sup> /h
<b>Max print width</b>	1.6m
<b>Max media thickness</b>	50mm
<b>Media type</b>	Rigid and flexible flat materials
<b>Ink</b>	Environmental friendly UV/LED curable ink(VOC free)
<b>Ink color</b>	C、M、Y、K、W
<b>Machine size(L*W*H)</b>	5.62*1.45*1.8 m
<b>Machine net weight</b>	2460KG
<b>Machine gross weight</b>	3330KG
<b>Power consumption</b>	9.0 KW(20A)
<b>Power supply</b>	400VAC. 50Hz 3P/N/PE
<b>RIP support</b>	Caldera
<b>UV Curing</b>	LED
<b>Interface</b>	High Speed PCIE
<b>Environment</b>	Seperated workroom in good cleaning and ventilated condition, avoid direct sunlight Temperature: 18° C – 30° C(64°F-86°F) Constant Humidity: 30%-70%



# HT3200UV

**Create value for customers; be a world-leading manufacturer of smart digital printing equipment.**

- Diversified product configuration and application solution can match the different demand in advertising, decorating, glass and other industries.
- Reliable stability combines the outstanding printing quality and speed performance.
- Top-level R&D team ensures prompt optimization and upgrade for new products and keep advanced technology in digital printing field.
- Strong worldwide after-sales service team quickly shoots your problem.
- High cost-value product brings you more business.

©Above information for reference only and subject to change without notice. Shenzhen Handtop Tech Co.,Ltd all rights reserved.



**Shenzhen HANDTOP Tech Co.,Ltd**

Add:The Third Factory, NO.322 Yuanhu Road, Longgang District Shenzhen China.  
Tel: +86 0755-2796 0460 E-mail: info-handtop@hanglorygroup.com  
Fax: +86 0755-2321 7841 http://www.hanglorygroup.com

# HT3200UV Hybrid Printer



## HT 3200UV Hybrid

3.2m width MEDIA AREA



### Kyocera KJ4A Printhead

Nozzle quality : 2656

Physical Resolution : 2\*300dpi

Pico-litter : Variable 4-6-10pl

Max Operating Frequency : 30Khz

Effective Print Width : 112.35mm



- **Retractable Alignment Bar**  
Retractable alignment bar allows accurate and consistent media placement.
- **Static suppression(optional)**  
Optional static suppression kit that eliminates static on the substrate.
- **Emergency Stop Switches**  
Stop operation from any corner when the printer is in emergency.
- **On Board Control Module**  
Rich functions, self-developed software, independent control module, efficient and convenient.
- **Auto Belt Correction System**  
Auto belt correction system will detect the moving of belt, if the shifting is detected, the system will automatically adjust the moving of belt to the right way.

## High-Speed Double Row Linear Motor Application

### Top level UV printing quality and productivity from Handtop

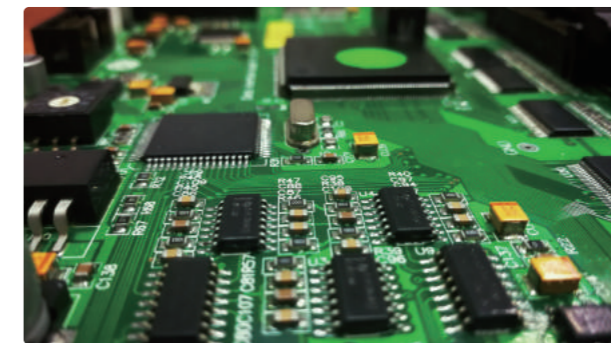
Kyocera print head is known as a type of print head with high precision, fast speed and strong stability all across the print head industry. The perfect combination with Handtop printers as well as a second upgrade of double row linear motor application, once again elevates the performance of Kyocera print head to a new era, bringing the miracle of high precision super fast printing to advertising industry.

- Realize high-quality printing of 105m<sup>2</sup>/h with 6 pass
- Realize 142m<sup>2</sup>/h high productivity printing with 4 pass



carriage head

- **Automatic negative pressure system**  
Using PCB board to control negative pressure, setting the negative pressure data from software.
- **Kyocera Print Heads(one head with 2 colors)**  
Featuring variable dots, true grayscale imaging 4, 6, and 10pl .
- **LED**  
Instant curing of UV ink for fast production. Flexible to be controlled during printing.
- **Auto Height Detection System**  
Automatically detects the height of media up to 50mm thickness and calibrates print head distance for variable dot placement and image quality.
- **The tension adjust device**  
The tension adjust device for the roller added,this device will help to prevent the feeding wrinkle.



Self-developed, customized driver and PCB board



Industrialized wiring makes it more artistic